

Municipality of the District of Chester

WASTE COLLECTION CALENDAR



Photo by: T. Harrish

2024

INDEX

Bag limits	pg 13, 25
Bag sizes.....	pg 6
Broken glass.....	pg 13
Bulky items	pg 12
Clear bag information.....	pg 6, 10
Collection map/routes	pg 16 - 18
Compostable bags	pg 8, 11, 21, 25
FAQs.....	pg 25
Hours of operation	pg 4, 32
Household Hazardous Waste.....	pg 28
Illegal dumping.....	pg 15, 26
Kaizer Meadow.....	pg 4, 32
Landfill fires.....	pg 24
Paper bags for compost.....	pg 21, 23
Provincial Treated Wood Ban.....	pg 5, 14
R6RECYCLES App.....	pg 13, 30
Sorting guide.....	pg 10
Winter waste collection.....	pg 9, 11

Special Leaf Collection will take place between November 18 & 29

Please see page 27 for details.



Special leaf collection takes place this week



Waste collection cancelled



Alternate collection day

LOOK FOR THESE SYMBOLS THROUGHOUT THE CALENDAR!

Message from the Warden

The new landfill cell which I spoke of last year has been completed, ensuring that we have the capacity to meet our own and our partners' needs moving forward.

We are currently exploring the potential environmental and financial benefits of creating a solar farm at Kaizer Meadow. A very exciting prospect! Managing waste and providing energy in an environmentally and financially sound manner has been, and will continue to be, a priority of the Municipality.

I thank both our staff and our community for helping us achieve these goals both now and moving forward.

All the best,

Members of Council
(left to right, back to front)
Municipal Solicitor - Sam Lamey;
District 1 - Councillor Andre Veinotte;
District 2 - Councillor Floyd Shatford;
District 5 - Councillor Abdella Assaff;
District 3 - Councillor Derek Wells;
District 7 - Councillor Sharon Church;
District 4 - Warden Allen Webber;
District 6 - Councillor Tina Connors

Municipality of the District of Chester,
P O Box 369, Chester NS B0J 1J0

Phone: 902-275-3554
Fax: 902-275-4771

Email: administration@chester.ca



December 2023

Questions? Call 902-275-2330

IMPORTANT INFORMATION REGARDING CHRISTMAS DAY, BOXING DAY & NEW YEAR'S DAY 2024 WASTE COLLECTION

This year, if your collection day falls on **CHRISTMAS DAY** (Dec. 25), please place your waste out for collection on **SATURDAY, DECEMBER 23.**

If your collection day falls on **BOXING DAY** (Dec. 26), please place your waste out and it will be **COLLECTED AS USUAL.**

If your collection day falls on **NEW YEAR'S DAY 2024** (Jan. 1), please place your waste out on **SATURDAY, DECEMBER 30.**

PLEASE CHECK THE CALENDAR AND LOOK FOR THE ICONS TO SEE WHEN YOUR COLLECTION WILL BE.



Sun	Mon	Tue	Wed	Thu	Fri	Sat
WEEK A					1	2
HAVE WASTE CURBSIDE FOR 7 A.M.						
3	4	5	6	7	8	9
WEEK B						
10	11	12	13	14	15	16
WEEK A						
17	18	19	20	21	22	23
WEEK B						 ALTERNATE COLLECTION
24	25	26	27	28	29	30
WEEK A	 CHRISTMAS DAY NO COLLECTION SITE CLOSED	BOXING DAY SITE CLOSED COLLECTION AS USUAL				 ALTERNATE COLLECTION FOR NEW YEAR'S DAY 2024
	31					
	WEEK B					



TAKING DOWN THE CHRISTMAS TREE?

No problem! Place it out on your next waste collection day and it will be collected as your bulky item!



GOT SOME BROKEN BULBS OR BROKEN GLASS?

No problem! Place broken glass in a box, seal it up and label it "BROKEN GLASS". Place **ALONG SIDE** your regular garbage on collection day!



The Municipality of Chester would like to wish everyone a very happy holiday season!



KaizerMeadow

Environmental Management Centre

Hours of Operation
Monday - Saturday - 8 a.m. - 4 p.m.
Sunday - Closed
902-275-2330
www.chester.ca

The Kaizer Meadow Environmental Management Centre is comprised of a waste management facility that actually improves the environment and an Eco-Park for green businesses. We are located at 450 Kaizer Meadow Road, Route 14, approximately 17 km North from Exit 8, Highway #103. Look for the sign!



Welcome to the Kaizer Meadow Wind Turbine Campsite! We now offer visitors the opportunity to rest, visit or stay overnight in this unique setting. The area can accommodate five or six tents, has a fire pit, washroom facilities and more!



Kaizer Meadow originally opened in 1993. At that time, there were approximately 100 dumpsites in NS. Today, there are only seven Second Generation Landfills in NS.



Half cells are now constructed at a cost of approximately \$6 million dollars each. Construction on Kaizer Meadow's landfill cell 3B (above) was completed in September 2023.



Kaizer Meadow is also the home of a 98 metre tall, 2 MW wind turbine which produces enough electricity for approximately 500 homes. The cost? \$5.5 million!



REMINDERS ABOUT KAIZER MEADOW:

- Kaizer Meadow **DOES NOT** accept asbestos waste
- Personal Protective Equipment (PPE) is **REQUIRED** beyond the Public Drop-off area

Questions? Call 902-275-2330 or email solidwaste@chester.ca

January 2024

www.chester.ca

PROVINCIAL TREATED WOOD DISPOSAL BAN

As of April 1, 2023, the Government of Nova Scotia made changes to how construction and demolition (C & D) debris is managed in NS. These new regulations will help reduce impacts to the environment created while managing specific C & D materials.

Treated (or pressure treated) wood is wood that is chemically treated so that it will resist decay. This treated wood is commonly used outside for things like telephone poles, railway ties, wharves, fences and decks. Due to its chemically treated process, treated wood will no longer be accepted as C & D material; it will need to be disposed in an approved landfill.

For more information on these new regulations that will be enforced as of July 5, 2024, please turn to **PAGE 14** or email us at solidwaste@chester.ca.



Sun	Mon	Tue	Wed	Thu	Fri	Sat
WEEK B	1 NEW YEAR'S DAY NO COLLECTION SITE CLOSED	2	3	4	5	6
WEEK A	8	9	10	11	12	13
WEEK B	15	16	17	18	19	20
WEEK A	22	23	24	25	26	27
WEEK B	29	30	31	HAVE WASTE CURBSIDE FOR 7 A.M.		

COLLECTION OF GREEN CARTS IN THE WINTER

Having issues with your cart freezing during the winter months? Be sure to place your cart out for collection every two weeks, even if it isn't full. Straining material and using **PAPER BAGS** will also help. Carts weighing over **150 lbs.** cannot be collected.



WASTE COLLECTION

A few tips and guidelines to remember about waste collection:

COLLECTION OF WASTE

ALL WASTE must be within 10 feet of the curb or it will not be collected.



ALWAYS place your waste at the end of your own driveway and **NOT** across the street.

WASTE IS COLLECTED EVERY TWO WEEKS, on your scheduled collection day. On your collection day, garbage, blue bag recyclables, recyclable paper, green cart and **ONE** bulky item will be collected. Questions? See **PAGE 18** or call Kaizer Meadow.

THE START TIME for waste collection is **7 A.M.** Please be sure to have your waste curbside for **7 A.M.** Breakdowns, weather, new drivers and route changes may affect when your waste is collected. Having your waste curbside by **7 A.M.** ensures you won't be missed. Trucks **WILL NOT** return to collect waste that was put out late.



DO NOT place your waste with your neighbour's waste unless both civic addresses are posted. If the waste collectors only see one civic number posted, they will only collect the allowable bag limit and will reject the rest.

BAGS, BAGS & MORE BAGS

INDUSTRIAL SIZED BAGS (larger than 31' x 42") **CANNOT** be collected at the curb. First, they are too heavy for one person to lift into the hopper of the truck, which is 3 feet from the ground. Second, these bags are too big to fit into the hopper of some of the collection trucks. Please do not use them.



ONLY ONE black bag will be collected per collection. Any more than that will be rejected.

WASTE THAT IS PLACED in garbage cans/containers **MUST BE** bagged. Loose waste will not be collected.

THE CLEAR BAGS FOR GARBAGE PROGRAM is not just for curbside collection. The **SAME** clear bag rules apply when delivering waste to Kaizer Meadow **AND** when bagging up waste for bulky item collection (see **PAGE 12** for details). Using clear bags encourages people to recycle and compost, and it also makes it safer for the people who handle your waste.

BLACK BAGS are subject to inspection. These bags are not meant to conceal unsorted waste. The bag is meant for any type of garbage, including "personal" garbage, that you do not want your neighbour to see.

THIS & THAT

IF YOU HAVE OR USE a waste collection box, be sure it's free of loose debris. The collector is not responsible for picking up loose waste. Also, if you share a box with other neighbours, remember that only **ONE** black bag is permitted per household. Civic numbers need to be posted so that the collector knows how many bags to collect.

February 2024

IMPORTANT INFORMATION REGARDING THE NS HERITAGE DAY WASTE COLLECTION

This year, if your collection day falls on the **HERITAGE DAY** (Feb. 19), please place your waste out for collection on **SATURDAY, FEBRUARY 17.**

PLEASE CHECK THE CALENDAR AND LOOK FOR THE ICONS TO SEE WHEN YOUR COLLECTION DAY WILL BE.

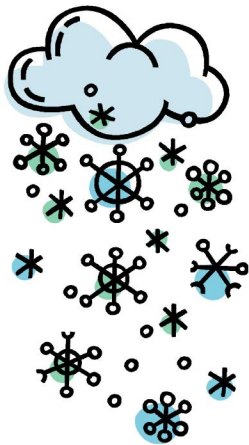


WASTE COLLECTION IN THE WINTER

In case of a snowstorm, listen to CKBW or call Kaizer Meadow at 902-275-2330 in the event that waste collection has been cancelled.

If cancelled, collection will be held the Saturday immediately following your regular collection.

Be sure to remove materials from the roadside as soon as possible to avoid the snow plow.



Questions? Call 902-275-2330

Sun	Mon	Tue	Wed	Thu	Fri	Sat
WEEK B				1	2 	3
WEEK A		HAVE WASTE CURBSIDE BY 7 A.M.				
4	5	6	7	8	9	10
WEEK B						17  ALTERNATE COLLECTION
WEEK A		NOVA SCOTIA HERITAGE DAY NO COLLECTION SITE CLOSED				
WEEK B		HAVE WASTE CURBSIDE FOR 7 A.M.				

IS YOUR WASTE ACCESSIBLE? IS YOUR PRIVATE ROAD PASSABLE?

Do you have a collection box that you use for your waste? Do you know that it needs to be accessible in order for you to receive waste collection? Please be sure that your box or collection area is clear of snow so that your collection service isn't interrupted.

Also, if you live on a private road, plow & salt/sand it BEFORE collection. If your road is not plowed, the collection truck may not collect your waste.

IMPORTANT PROGRAM CHANGES: SWITCH TO PAPER!

COMPOSTABLE BAGS & COFFEE/ PAPER CUP CONTAMINATION

A few years ago, our organics processor, the Lunenburg Regional Community Recycling Centre (LRCRC), asked us to support the use of paper-based liners in green carts and to urge residents and businesses to place hot/cold drink cups into the garbage instead of into the organics stream.

Often used plastic-like bags and cups have a negative effect on the processing of organic material. When the bags and cups make their way into the curing (aging, maturing) stage, they do not breakdown quickly and tend to get stuck in the grinding equipment used during processing. As a result, we asked our residents and businesses to voluntarily switch to a paper liner and place cups in the garbage.

As of **JUNE 1, 2023**, we no longer accept plastic – like compostable bags and hot/cold paper drink cups in green carts. If you have already made the switch, thank you for supporting this change! If you have not, expect to see a reminder or **REJECTION** sticker on your green cart. Please make the switch to avoid possible rejection of your green cart!

If you have any questions about processing or the program change, please contact LRCRC at 902-543-2991. If you have other questions, please contact Kaizer Meadow at 902-275-2330 or email us at solidwaste@chester.ca.



Compostable bags and paper cups stuck in the grinding equipment at the LRCRC.

Compostable bags do not fully breakdown in the organics processing system...



...causing widespread contamination and equipment breakdowns at the Lunenburg Regional Community Recycling Centre.



Even after a year, bags and cups are still visible in the compost pile.



Paper bags or paper-based liners are always the preferred option. Paper breaks down 100% and most of these items can be found in your home (cereal boxes, newspaper, etc.)!

March 2024

www.chester.ca

IMPORTANT INFORMATION REGARDING GOOD FRIDAY WASTE COLLECTION

This year, if your collection day falls on **GOOD FRIDAY** (March 29), please place your waste out for collection on **SATURDAY, MARCH 30**.

PLEASE CHECK THE CALENDAR AND LOOK FOR THE ICONS TO SEE WHEN YOUR COLLECTION DAY WILL BE.



WINTER WASTE COLLECTION DELAYS

During the winter months, slippery roads are a given. Slippery roads equal delays. When we have inclement weather, waste collection trucks may not show up at the time you are accustomed to.

Play it safe and always have your waste out for **7 A.M.**





Sun	Mon	Tue	Wed	Thu	Fri	Sat	
WEEK B					1	2	
HAVE WASTE CURBSIDE FOR 7 A.M.							
3 WEEK A	4	5	6	7	8	9	
10 WEEK B	11	12	13	14	15	16	
							
17 WEEK A	18	19	20	21	22	23	
							
24 WEEK B	25	26	27	28	29	30	
31 WEEK A Easter						 GOOD FRIDAY NO COLLECTION SITE CLOSED	 ALTERNATE COLLECTION

HOW SPRING WEIGHT RESTRICTIONS AFFECT YOUR ROAD

If your road is affected by the spring weight restrictions imposed by the Department of Public Works, a smaller truck is used for waste collection. Garbage bags, blue/clear bags, paper, cardboard and green carts **CAN BE COLLECTED AS USUAL**. Green cart material needs to be bagged. Visit <https://novascotia.ca/tran/trucking/springweight.asp> for road updates.



THE MUNICIPALITY OF CHESTER'S FOUR STREAM SORTING GUIDE

RECYCLABLES (BLUE BAG)	RECYCLABLE PAPER (CLEAR BAG)	ORGANICS (GREEN CART)	GARBAGE (CLEAR BAG)
<ul style="list-style-type: none"> • Plastic containers, tubs, lids & bottles (shampoo, yogurt, detergent, cookie trays, cleaning fluid bottles, etc.) • Plastic bags (grocery, bread, shopping, frozen food, Ziploc® bags, etc.) • Aluminum foil, cans, pie plates & trays • Tin & steel cans • Metal lids & tops (place in can & crimp shut) • Glass bottles & jars (baby food, pickle, Mason jars, pasta, etc.) • Milk containers • Paper cartons (juice, sauerkraut, etc.) • Refundable beverage containers (pop cans, bottles, juice packs, liquor bottles, etc.) • Plastic fruit & vegetable trays 	<ul style="list-style-type: none"> • Newspaper & flyers • Magazines • Catalogues & phone books • Soft covered books • Hard covered books (remove cover & place in same bag) • Junk mail • Office paper • Envelopes (plastic windows do not have to be removed) • Egg cartons & paper trays • Writing paper • Note pad & copier paper • Shredded paper • Boxboard (paper towel & toilet paper rolls, cereal & detergent boxes, frozen food boxes, Kleenex & shoe boxes) • File folders • Greeting cards 	<ul style="list-style-type: none"> • All food waste (peelings, bones, dairy, seafood shells, etc.) • Coffee grounds, filters & tea bags • Pizza boxes • Paper towels & napkins • Wet or soiled paper or boxboard • Waxed paper/cardboard • Paper dishes • Sugar, flour & potato bags (paper) • Wooden stir sticks • Tissue paper • Leaves & grass • Sawdust & wood shavings (douse with water before collection to avoid a blowing hazard) • Twigs & branches, small brush 	<ul style="list-style-type: none"> • ALL Styrofoam™ • Candy wrappers & chip bags • Cigarette butts • Clothing & foot wear • Disposable diapers • Feminine products • Kitty litter & dog waste • Vacuum bags & floor sweepings • Toothpaste tubes • Frozen juice cans • Dryer sheets & lint • Popcorn bags • Soiled/dirty plastic wrap • Soiled/dirty aluminum foil • Incandescent light bulbs • Broken glass (place in box and label "BROKEN GLASS") • Kleenex® • Paper drink cups (see pg. 8 for details)
<p>Beverage containers (excluding milk cartons) can also be returned to an ENVIRO-DEPOT™ for a refund.</p> <div style="border: 1px solid blue; padding: 5px; margin: 5px 0;"> <p>RECYCLABLES MUST BE CLEAN OR THEY WILL BE REJECTED!</p> </div> <div style="border: 1px solid blue; padding: 5px; margin: 5px 0;"> <p>RECYCLABLE CONTAINERS & RECYCLABLE PAPER DO NOT BELONG IN THE SAME BAG.</p> </div>	<p>Corrugated cardboard (flatten boxes & tie in 2' x 2' x 3' bundles & place next to other bags of recyclable paper).</p> 	<p>DO NOT place branches more than 2" in diameter in the cart or that they stick out over the top of the green cart. The lid must be able to close.</p> <p>TIE branches in 3' long bundles and place them out beside your cart.</p> <p>If your cart is full, put a MAXIMUM of 3 paper bags of leaves out per collection.</p> <p>NO PLASTIC OR THE CART WILL BE REJECTED!</p>	<div style="border: 2px solid red; padding: 10px;"> <p>HOUSEHOLD HAZARDOUS WASTE must be taken directly to Kaizer Meadow in a labeled container that WILL NOT leak. See page 28 or more details on hazardous waste.</p>  </div>

April 2024

Questions? Call 902-275-2330

7 A.M. — BE THERE OR BE LATE!

7 A.M. is when the waste collector starts collecting your waste. Although the collector tries to maintain pick up times, sometimes this is not possible. New drivers, road conditions & breakdowns may alter collection times. Please do not get accustomed to placing your waste out later than 7 A.M.



If waste is placed out late, trucks **WILL NOT** return to collect it.



#FACTS

'COMPOSTABLE'
PLASTIC DOES NOT
DEGRADE

Plastic-like compostable bags do not break down during the municipal composting process.

Please use paper

902-275-2330 | phone
solidwaste@chester.ca | email
www.chester.ca/waste-recycling


FLARES, EXPLOSIVES & AMMUNITION

Flares, explosives and ammunition can create a huge safety hazard when not disposed of correctly. These items **NEVER** belong in the garbage, blue bag, green cart or even at the Household Hazardous Waste depot at Kaizer Meadow. These items must be taken directly to your local RCMP office.



Sun	Mon	Tue	Wed	Thu	Fri	Sat
WEEK A	1 Easter Monday Site Open Collection as usual	2	3	4	5	6
WEEK B	8	9	10	11	12	13
WEEK A	15	16	17	18	19	20
WEEK B	22	23	24	25	26	27
WEEK A	29	30	SEE PAGES 16 —18 FOR YOUR COLLECTION DAY			

SAFE SHARPS BRING BACK PROGRAM

Needles, syringes and lancets **NEVER** belong in the garbage, recycling bags or green cart. They can seriously injure and cause unnecessary stress to staff. Ask your pharmacist for a **FREE** Safe Sharps container and then return the full container to the pharmacy for **FREE** and **PROPER** disposal.



BULKY ITEM COLLECTION

Businesses and residents can place **ONE** bulky item alongside regular waste on collection day. Below is an outline of what is acceptable and not acceptable as a bulky item. If you are still unsure, please call Kaizer Meadow at 902-275-2330. Remember: **WHEN IN DOUBT, FIND OUT!**

What classifies as a bulky item? A bulky item can be a chair, a sofa, a mattress, a washer, or a wooden pallet. It can also be **ONE** extra clear bag of garbage.

ACCEPTABLE ITEMS

- **ONE** large appliance - stoves, dishwashers, hot water tanks, etc.
- Metals - small car parts, lawn mowers (fluids **MUST** be removed), etc.
- **ONE** piece of furniture or mattress.
- Lobster traps - **LIMIT** of **ONE** trap per residence; any more than this will not be collected.
- **ONE BUNDLE** of wood - wood cannot exceed 4 feet in length & 50 lbs in weight; small pieces must be bundled, boxed or bagged.
- **ONE BUNDLE** of drywall - drywall cannot exceed 4 feet in length & 50 lbs in weight; small pieces must be bundled, boxed or bagged.
- **ONE BUNDLE** of asphalt shingles - asphalt shingles cannot exceed 50 lbs in weight; small pieces must be bundled, boxed or bagged.

NON-ACCEPTABLE ITEMS

- Electronics - see page 20 for a detailed list. These items will **NOT** be collected.
- Tires - take to Kaizer Meadow. Retailers can also take up to 4 tires at a time, free of charge.
- HHW - paints, oils, fuels, pesticides, etc. must be taken to Kaizer Meadow's HHW Depot. See page 28 for a detailed list.
- Propane tanks - can be taken to Kaizer Meadow.
- Items containing Freon® - refrigerators, freezers, dehumidifiers & air conditioners must be taken to Kaizer Meadow.
- Bags larger than 31" x 42" will not be collected.
- **MULTIPLE BLACK BAGS** will not be collected (only one black bag will be collected per civic address).

BAG LIMITS

- 6 bags of garbage (1 black bag permitted)
- 10 bags of recyclables/paper/cardboard
- 1 green cart
- 1 bulky item

More Guidelines...

- **DO NOT** place anything that you wish to keep near the curb or near your waste collection box on collection day. The waste collector may mistake the item as a bulky item.
- **IF YOU CAN'T SEE IT, NEITHER CAN THE COLLECTOR.** Do not bury blue bags or recyclable paper beneath or behind your bulky item. The driver will not rummage through to look for these items. Please keep them separate and visible, or they may be missed.
- **IMPORTANT:** If you choose to have an extra bag of garbage instead of a larger item, this is acceptable. Just be sure you only have **ONE** black bag at the curb. Over the limit black bags will still be **REJECTED**.

May 2024

www.chester.ca

Download the R6RECYCLES app and never miss another collection day!

- ⇒ Create a personalized collection calendar
- ⇒ Find out 'What Goes Where'
- ⇒ Receive notifications by email, text or phone
- ⇒ Receive real time alerts on weather related service disruptions



- ⇒ Play our 'What Goes Where' sorting game

No smart phone or tablet?

No problem! This information can be found online at www.chester.ca/r6recycles.



BROKEN GLASS?

Broken glass should **NEVER** be placed in your garbage bag. Place it in a box, seal it up and label it **"BROKEN GLASS"**.



Sun	Mon	Tue	Wed	Thu	Fri	Sat
WEEK A			1	2	3	4
HAVE WASTE CURBSIDE FOR 7 A.M.						
5	6	7	8	9	10	11
WEEK B						
12	13	14	15	16	17	18
WEEK A						
Mother's Day						
19	20	21	22	23	24	25
WEEK B						
Victoria Day Site Open Collection as usual						
26	27	28	29	30	31	
WEEK A						

BAG LIMITS FOR RESIDENTS & BUSINESSES

On your collection day, you are allowed the following:

- 6 bags of garbage (5 clear, 1 black bag)
- 10 bags of recyclables (including bags of recyclable paper & bundles of cardboard)
- 1 green cart (3 paper bags of yard waste is permitted as well)
- 1 bulky item (chair, washer, stove, etc.)



Need more information on bulky items? See **PAGE 12** for more information.

INFORMATION REGARDING USED OIL AND ANTIFREEZE CONTAINERS

In September 2019, the Province of Nova Scotia introduced a new regulation for safe disposal and recycling of used oil and glycol (antifreeze) products. The Used Oil Management Association Atlantic (UOMA) is managing this program.

What does this mean? Residents can bring their used items to the Household Hazardous Waste Depot at Kaizer Meadow for recycling. UOMA Atlantic will then collect these used containers from Kaizer Meadow for proper recycling through their program. These items include:

- used oil containers (50 litres or less)
- used antifreeze containers (50 litres or less)
- oil filters
- diesel exhaust fluid containers (50 litres or less)
- lubricating aerosols
- automotive parts cleaner

On March 1, 2020, used oil and glycol products and containers were **BANNED** from disposal in landfills.

For more information about UOMA Atlantic, this program and alternative drop off sites for these materials, please visit their website at www.uoma-atlantic.com.



TREATED WOOD DISPOSAL BAN: WHAT IS TREATED WOOD?

As of July 5, 2024, treated wood is banned from disposal at Construction & Demolition (C & D) sites. This ban, which was put in to place by the Province of Nova Scotia, will help prevent negative environmental impacts such as, contamination of ground water and surface water.

WHAT IS TREATED WOOD & WHERE IS IT USED? Treated (or pressure treated) wood is wood that is chemically treated with creosote, pentachlorophenol or other preservatives during the factory treatment process. These preservatives help prevent decay.

Treated wood is used in both residential and commercial projects where the wood is in direct contact with water or soil. Examples would be: docks, wharves, bridge cribwork, telephone poles, fences, decks and retaining walls.

WHY IS TREATED WOOD BANNED FROM DISPOSAL IN C & D DEBRIS DISPOSAL CELLS? Over time, the preservatives injected into this wood will leach or seep out as it decays. Banning the wood from disposal in these C & D debris cells will help prevent negative impacts to the environment.

Municipal solid waste landfill cells are designed and built to provide a higher level of environmental protection (complex liner system) and to prevent leakage. Landfill cells also collect and treat contaminated water before it is discharged into the environment. C & D disposal cells are not built to the same standard.

HOW TO IDENTIFY TREATED WOOD



NEW TREATED WOOD - this wood is easily identified because it is tagged to identify the type of preservative used to treat the wood.



PRESSURE TREATED WOOD - typically green or brown in color. The surface may have small slits where the preservative was injected.



CREOSOTE TIMBERS - often brown, tan, or black-tarry coated beams with an oily smell. Old timbers may be grey.

June 2024

Questions? Call 902-275-2330

NEED COMPOST?

Kaizer Meadow has a limited supply of compost that is usually ready to harvest in late spring. Please call 902-275-2330 or email solidwaste@chester.ca for availability.



A FEW REMINDERS ABOUT RECYCLABLES & PAPER

- Paper & recyclables **CANNOT** be mixed; paper goes in one bag & plastics & tins into another.
- Recyclables **MUST** be clean. Rinse all containers before placing them in the bag.
- Recyclables **CAN** be rejected. If bags are mixed with paper, are dirty or the bag has garbage in it, the bag will be rejected.
- Recyclables can be placed in a **BLUE** or **CLEAR** bag. Paper **MUST** be placed in a **CLEAR** bag.



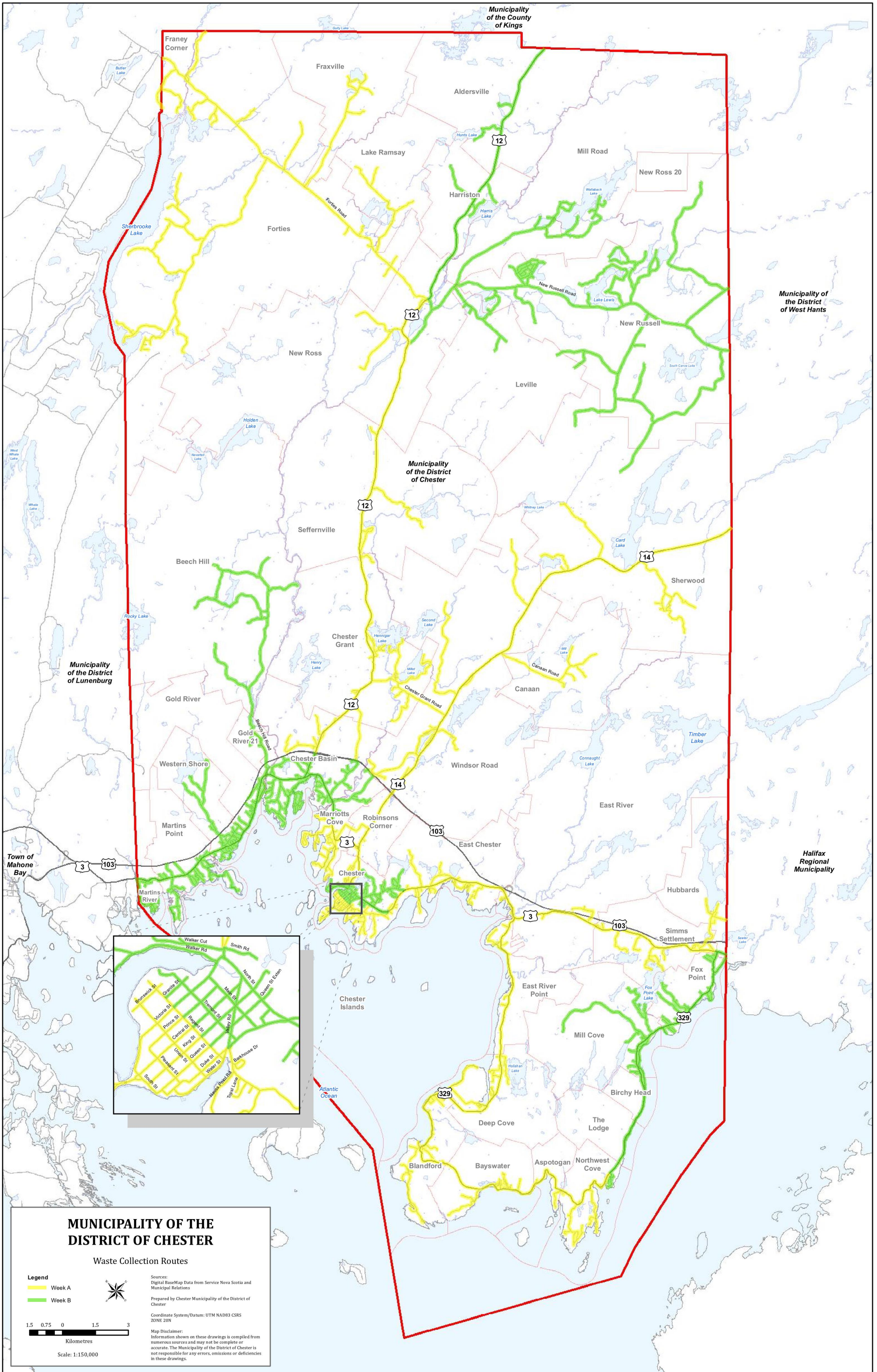
Sun	Mon	Tue	Wed	Thu	Fri	Sat
SEE PAGES 16 –18 FOR YOUR COLLECTION DAY						1
WEEK A						
2	3	4	5	6	7	8
WEEK B						
9	10	11	12	13	14	15
WEEK A						
16	17	18	19	20	21	22
WEEK B						
Father's Day						
23	24	25	26	27	28	29
WEEK A						
	30					
	WEEK B					
						 ALTERNATE COLLECTION FOR CANADA DAY

COTTAGE WASTE

Just like at home, cottage waste **MUST** be properly sorted. Most times, cottage roads do not have access to curbside collection. Most will have a waste collection area at the beginning of their road. This area is meant for the residents of that road only. If someone dumps waste at these areas and is not permitted to, that waste is considered illegally dumped and is in contravention of our Solid Waste By-Law.



Photo: T. Harnish



MUNICIPALITY OF THE DISTRICT OF CHESTER

Waste Collection Routes

Legend

- Week A
- Week B

1.5 0.75 0 1.5 3
Kilometres
Scale: 1:150,000

Sources: Digital BaseMap Data from Service Nova Scotia and Municipal Relations
 Prepared by Chester Municipality of the District of Chester
 Coordinate System/Datum: UTM NAD83 CSRS ZONE 20N
 Map Disclaimer: Information shown on these drawings is compiled from numerous sources and may not be complete or accurate. The Municipality of the District of Chester is not responsible for any errors, omissions or deficiencies in these drawings.

WEEKDAY	WEEK A	WEEK B
Monday	Starting at the intersection of Hwy. 3 and Hwy. 329 at East River, including part of Northwest Cove, Aspotogan, Bayswater, Blandford, Upper Blandford, Deep Cove and part of East River , and ending at 2400 Hwy. 329 and including Tilley Point Road.	Starting at the abandoned rail line where it intersects with Hwy. 3 in Hubbards and ending at and including Leeward Point Rd Hwy 329. This includes part of Northwest Cove, The Lodge, Birchy Head, Mill Cove, Fox Point and part of Hubbards to the abandoned rail line where it intersects with Hwy. 3 in Hubbards including Fox Point Front Rd.
Tuesday	<p>Starting at the intersection of Pig Loop Rd. and Valley Rd. turning South onto Duke St. to the intersection of Duke St. and Regent St. including Regent St. and all streets in the Village of Chester lying South of Regent St. including the Peninsula.</p> <p>Starting at the intersection of Haddon Hill Rd. and Hwy. 3 including all of Haddon Hill Rd., all of Robinsons Corner (including Robinsons Corner Rd.) and including part of Marriotts Cove to and including Marriotts Cove Rd East and Marriotts Cove Rd West. Also, including Hwy. 3 to Douglas Avenue.</p> <p>Starting at Pig Loop Rd. and ending at the intersection of Duke St. and Pig Loop Rd. including all of Pig Loop Rd., Zinck Rd., Golf Course Rd., Chandler Rd., and Nauss Point.</p> <p>Starting at the East Chester Recreation Association building on Hwy. 3 and ending at Chester Shore Rd., including Stevens Rd.</p>	<p>This also includes all streets in the Village of Chester lying North of Regent St. including Walker Rd. and Walker Cut.</p> <p>From Chester Shore Rd. to the Old Train Station, excluding Chester Shore Rd.</p> <p>Starting at the East Chester Recreation Association building traveling along Old Trunk 3 to the intersection of Hwy. 3 and Haddon Hill Rd. (next to the Old Train Station). This includes all of Old Trunk 3, Chester Downs, Islandview Subdivision, all of Stanford Lake Rd. (to where it intersects with Hwy. 3), Chester Commons Rd., Maplewood Dr., and Target Hill Rd.</p>
Wednesday	<p>Starting at the intersection of Route 14 and Hwy. 3 to the Landfill including Chester Grant Rd. to Route 12, Wake Up Hill Rd. and all of Route 14.</p> <p>Starting at the intersection at Marriotts Cove Rd. and Hwy 3 ending at Marina Rd., including Marina Rd., Shaw Island, and part of Marriotts Cove.</p>	Starting at Marina Rd. and ending at the old Gold River School (6200 Hwy 3), including part of Marriotts Cove, Middle River, Chester Basin, Croft Rd., Beech Hill Rd., Bridgeview Drive, Gold River Rd. and all other roads along Hwy 3. Also including part of Route 12 where it intersects with Hwy 3 to Hwy 103 (Exit 9 carpool).
Thursday	Starting at Hwy 103 (Exit 9 carpool) along Route 12, including Lacey Mines Rd., Clinton Rd., North Lower Grant Rd., to New Ross where Route 12 intersects with the Forties Rd., including all of the Forties and over to the county line at Franey Corner, including Sefferville, Forties, Lake Ramsay, Glengarry and Fraxville to the intersection of Route 12 and Forties Rd.	<p>Starting at the county line at New Russell over to the junction of Lake Lawson Road, including Lake Lawson Road and also including Mill Rd. and Leville.</p> <p>Starting at the county line in Aaldersville to the intersection of Route 12 and Forties Rd.</p>
Friday	Starting at East Chester Recreation Association building and ending at the abandoned rail line in Hubbards and all roads in between. This includes Simms Settlement, Dauphinee Mill Lake Rd. & Otter Point.	Beginning at the bridge in Martins River and ending at the old Gold River School (6200 Hwy 3) in Gold River. This includes all roads in Martins Point, Western Shore and part of Gold River between the old Gold River School (6200 Hwy 3) and Martins River Bridge.

July 2024

www.chester.ca

IMPORTANT INFORMATION REGARDING CANADA DAY WASTE COLLECTION

This year, if your collection day falls on **CANADA DAY** (July 1), please place your waste out for collection on **SATURDAY, JUNE 29**.

**PLEASE CHECK THE CALENDAR AND
LOOK FOR THE ICONS TO
SEE WHEN YOUR
COLLECTION DAY WILL BE.**



DELIVERING WASTE TO KAIZER MEADOW

When delivering waste to Kaizer Meadow, it is important to remember to secure **ALL** loads.

Unsecured loads of waste not only can cause an unsightly mess, it can also create a huge safety hazard.



NOT SURE WHAT TO DO WITH CFL BULBS?

Compact fluorescent bulbs (CFL) can be dropped off at one of our convenient drop-off locations. Not sure where the drop-off locations are? Turn to **PAGE 30** to find a location close to you!



Sun	Mon	Tue	Wed	Thu	Fri	Sat
WEEK B	1 CANADA DAY NO COLLECTION SITE CLOSED	2	3	4	5	6
7	8	9	10	11	12	13
WEEK A						
14	15	16	17	18	19	20
WEEK B						
21	22	23	24	25	26	27
WEEK A						
28	29	30	31	HAVE WASTE CURBSIDE BY 7 A.M.		
WEEK B						

CARDBOARD

Be sure that your cardboard is flattened and tied into 2' x 2' x 3' bundles. Unbundled cardboard may not fit into the hopper of the truck and may be **REJECTED**.



WHAT'S THE SCOOP ON AEROSOL CANS?

Empty aerosol cans are recyclable, however, they cannot be placed for curbside collection as it poses a safety issue for the waste collection vehicles. Please take your empty cans to either Kaizer Meadow or Adams Bottle Exchange in Gold River.



ENVIRO-DEPOT™ - ADAMS BOTTLE EXCHANGE

Adams Bottle Exchange is located at 5960 Highway #3 in Gold River. This is what they can do for you...

- Accept electronics.** Adams Bottle Exchange is a drop-off for all acceptable electronic waste.
- Accept refundable beverage containers.** You get a 5¢ refund for all non-liquor beverage containers less than 5L; you also receive 5¢ for liquor beverage containers 500ml or less and 10¢ for liquor beverage containers greater than 500ml. Please remove all caps, rinse containers and do not crush. Containers include:
 - Aluminum beverage containers & steel beverage cans
 - Glass beverage bottles & liquor bottles
 - Paper juice cartons & tetra-paks
 - Plastic beverage containers

For details on these programs, contact Adams Bottle Exchange Ltd. at 902-212-0989.

NO DAIRY OR MEAL REPLACEMENT CONTAINERS (place in bag with other recyclables).

3. Accept paint. Below is a list of paint products you can and cannot bring. Containers must be tightly sealed and clearly labeled with their contents. Please do not return paint in glass containers or mix alkyd (oil-based) and latex (water-based) paints.

ACCEPTABLE PAINTS	NON-ACCEPTABLE PAINTS
Interior/exterior latex, alkyd, enamel & oil-based paints	Paints containing pesticides or wood preservatives that are registered under Pest Control Act (ie. Marine anti-fouling paint)
Porch, floor & deck paint	Craft paint (aerosols acceptable)
Interior & exterior varnishes & urethanes	Automotive paint (aerosols acceptable)
Marine enamels	Industrial or two-part paint
Wood finishing oils, stain & shellac	Roof patch
Latex driveway sealers	Brushes, rags & rollers
Rust paint, decorative metal paints	Paint in glass containers



ELECTRONICS RECYCLING



The Electronic Product Recycling Association (EPRA) allows for the recycling of the following electronics. Please call 1-877-462-8907 or visit www.recyclemyelectronics.ca/ns for more information.

- Televisions (TVs)
 - Computers (including laptops, notebooks)
 - Computer scanners
 - Computer monitors
 - Computer CPUs
 - Cables, mice, keyboards & other components
 - Telephones (cordless & corded)
 - Fax machines
 - Answering machines
 - Radios & clock radios
 - VCRs
 - DVD players
 - Stereos & amplifiers
 - Speakers
 - CD players
 - MP3 players
 - Digital cameras
 - Video cameras & camcorders
 - Car stereo systems
 - Home theaters in a box
- NEW!**
- Microwave ovens
 - E-readers
 - GPS units
 - Video Game Systems & controllers
 - External hard drives, optical drives & modems



The electronics listed on this page **WILL NOT** be collected at the curb, even as a bulky item.

The EPRA Drop-off in the Municipality of Chester is located at **ADAM'S BOTTLE EXCHANGE**, #5962 Highway #3, Gold River.



Cell phones can be recycled through the Recycle My Cell program. For locations or information about the program, visit www.recyclemycell.ca or call 1-888-797-1740.

August 2024

Questions? Call 902-275-2330

IMPORTANT INFORMATION REGARDING THE CIVIC HOLIDAY WASTE COLLECTION

This year, if your collection day falls on the **CIVIC HOLIDAY** (Aug. 5), please place your waste out for collection on **SATURDAY, AUGUST 3.**

PLEASE CHECK THE CALENDAR AND LOOK FOR THE ICONS TO SEE WHEN YOUR COLLECTION DAY WILL BE.



ARE YOU STILL USING COMPOSTABLE BAGS?

If you are, **PLEASE STOP!** These plastic-like liners may be convenient, but they do not break down well and can get stuck in the grinding equipment at the composting facility causing operational issues and delays.

Instead, use a paper liner or no liner at all!

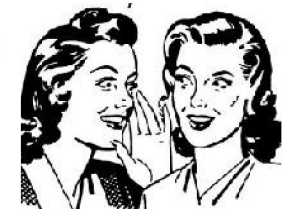
For more information, see **PAGE 8.**



Sun	Mon	Tue	Wed	Thu	Fri	Sat
WEEK B				1	2	3  ALTERNATE COLLECTION
4	5  CIVIC HOLIDAY NO COLLECTION SITE CLOSED	6	7	8	9	10
WEEK A						
11	12	13	14	15	16	17
WEEK B						
18	19	20	21	22	23	24
WEEK A						
25	26	27	28	29	30	31  ALTERNATE COLLECTION FOR LABOUR DAY
WEEK B						

GET THE CORRECT INFORMATION

So many times we hear the phrase, “Somebody told me...” or “I heard that...”. Sometimes, that “somebody” is wrong. To get the correct information on waste and recycling, please call Kaizer Meadow at 902-275-2330 or email “Dear Shabby” at solidwaste@chester.ca. Shabby and staff will gladly give you the **CORRECT** information!



September 2024

www.chester.ca

IMPORTANT INFORMATION REGARDING LABOUR DAY WASTE COLLECTION

This year, if your collection day falls on **LABOUR DAY** (Sept. 2), please place your waste out for collection on **SATURDAY, AUGUST 31**.

**PLEASE CHECK THE
CALENDAR AND LOOK
FOR THE ICONS TO SEE
WHEN YOUR COLLECTION
DAY WILL BE.**



A FRIENDLY REMINDER...

Refrigerators and freezers **CANNOT** be placed at the curb for collection.

Any item, whether it contains Freon® or not, must be taken to Kaizer Meadow for disposal.

This includes dehumidifiers and air conditioners.

Questions?

Email solidwaste@chester.ca.



Sun	Mon	Tue	Wed	Thu	Fri	Sat
1 WEEK A	2 LABOUR DAY NO COLLECTION SITE CLOSED	3	4	5	6	7
8 WEEK B	9	10	11	12	13	14
15 WEEK A	16	17	18	19	20	21
22 WEEK B	23	24	25	26	27	28
29 WEEK A	30 National Day for Truth & Reconciliation Site Open Collection as usual					

PAPER LINERS - THE BEST OPTION

When bagging up leaves and yard waste, the use of paper bags is always the best option. Paper bags are also preferred if you use bags for your food waste. They break down and decompose quickly and paper bags tend not to get stuck in the processing grinder like the compostable bags do. If you use compostable bags, please switch to a paper alternative. See **PAGE 8** for more details.



#FACTS

LANDFILL FIRES:

DANGEROUS & COSTLY BUT NOT UNCOMMON



Unfortunately, fires in the landfill are not uncommon. These situations are very costly, pose huge safety issues and concerns resulting in site closures which are very inconvenient to our residents and waste haulers.

Many factors can contribute to the cause of a fire and sometimes, the cause is unclear and hard to pin-point. We have had quite a number of fires at Kaizer Meadow, most of which are caught early by staff and can be extinguished quickly. Others are much too big and dangerous and require the help of fire fighting professionals. With these larger fires, multiple departments are called on site to assist. It can take hours to fully extinguish these fires.

Some of the more common “fire starters” can be found in your home:

- Household batteries
- Propane tanks
- Aerosol cans
- Hazardous waste & chemicals (which cause reactions)
- Flares & ammunition (drop off at RCMP Detachment)

Most of these items can be dropped off at Kaizer Meadow for proper disposal/recycling! **NEVER** throw these items in the garbage.



#FACTS

BATTERIES CAN CAUSE LANDFILL FIRES

Recycle alkaline and lithium batteries at

Kaizer Meadow Landfill
Municipal Office
Adam's Bottle Exchange

902-275-2330 | phone
solidwaste@chester.ca | email
www.chester.ca/waste-recycling



October 2024

Questions? Call 902-275-2330

FAQs

HOW MANY BAGS CAN I PUT OUT ON COLLECTION DAY?

BUSINESSES & RESIDENTS are entitled to the following collection, every two weeks:

- 6 bags of garbage (1 black bag, 5 clear)
- 10 bags of recyclables/recyclable paper/bundles of cardboard
- 1 green cart
- 1 bulky item (see **PAGE 12** for details)



WHEN CAN I PUT MY WASTE OUT?

All waste **MUST** be curbside prior to 7 A.M. on your scheduled collection day. Waste may also be placed at the curb for collection **NOT EARLIER** than dusk of the day **PRIOR** to collection, as outlined in the Waste Collection & Disposal By-Law. The owner of the property is responsible for the waste until it is collected.

HOW FAR FROM THE CURB CAN I PLACE MY WASTE?

ALL waste must be within **10 FEET** of the curb or it will not be collected. This includes any waste collection boxes.



Sun	Mon	Tue	Wed	Thu	Fri	Sat
WEEK A		1	2	3	4	5
6 WEEK B	7	8	9	10	11	12
13 WEEK A	14  Thanksgiving Site open Collection as usual	15	16	17	18	19
20 WEEK B	21	22	23	24	25	26
27 WEEK A	28	29	30	31 	HAVE WASTE CURBSIDE BY 7 A.M.	

CAN I USE THE COMPOSTABLE "PLASTIC-LIKE" BAGS IN MY GREEN CART?

In an effort to improve the composting process, we would like residents to stop using compostable bags and switch to a paper-based option (bags, boxboard, newspaper, etc.), effective immediately. Alternatively, do not use any liners at all. In addition, we would like you to place any hot/cold drink cups into the garbage instead of the green cart. For more information, see **PAGE 8**.



ILLEGAL DUMPING: IT'S EVERYBODY'S BUSINESS!

Did you know that there have been dozens and dozens of illegal dumps reported in our Municipality alone? Dumping creates an unsightly and dangerous mess! What are people dumping? Well, usually it is construction and demolition waste (shingles, wood, drywall, etc.), loose waste and rejected and unsorted waste. Also at many dump sites, hazardous waste is found which is harmful to not only the environment but it is also harmful to wildlife and to residents who may have a drinking well nearby.



Did you also know that dumping in commercial dumpsters, Municipal waste collection areas, and even in your neighbour's garbage box is also considered illegal dumping? The Municipality has many waste collection sites for roads that do not have access to curbside collection. These collection sites are meant **FOR THE RESIDENTS WHO LIVE ON THAT ROAD ONLY**. These sites are **NOT** meant for dumping rejected garbage, construction waste or hazardous waste. No matter where it is, **ILLEGAL DUMPING is ILLEGAL!**

The good news? Most of the offenders are identified!

If you see or know someone who is illegally dumping waste, please report it by calling Kaizer Meadow at 902-275-2330.

LET'S KEEP OUR ENVIRONMENT CLEAN!



November 2024

www.chester.ca

DON'T FORGET!
LEAF & YARD WASTE WILL BE COLLECTED THIS MONTH



LEAVES IN CLEAR, PLASTIC BAGS WILL BE COLLECTED FROM NOVEMBER 18 - 29 ON YOUR REGULAR SCHEDULED DAY.

Special leaf collection is the only time that **CLEAR, PLASTIC** bags can be used to bag leaves. It is also the only time that an **UNLIMITED** amount of bagged leaves will be collected.

During regular collection, yard waste (leaves, grass clippings, garden trimmings, etc.) can go in your green cart. If your green cart is full, you can put **UP TO THREE PAPER BAGS** alongside your green cart each collection. Paper bags are always the preferred option.

DO NOT put branches in a bag. Please tie them in 3' long bundles and place them in the green cart and **ONLY IF THEY DO NOT EXCEED 2" IN DIAMETER OR STICK OUT OF THE TOP OF THE CART.**



Sun	Mon	Tue	Wed	Thu	Fri	Sat	
SEE PAGES 16 –18 FOR YOUR COLLECTION DAY					1	2	
WEEK A							
3 WEEK B 	4	5	6	7	8	9  ALTERNATE COLLECTION	
10 WEEK A	11  REMEMBRANCE DAY NO COLLECTION SITE CLOSED	12	13	14	15	16	
17 WEEK B	18 	SPECIAL LEAF COLLECTION IS ON YOUR				22	23
24 WEEK A	25 	REGULAR DAY DURING THESE TWO WEEKS				29	30

IMPORTANT INFORMATION REGARDING LABOUR DAY WASTE COLLECTION

This year, if your collection day falls on **REMEMBRANCE DAY** (Nov. 11), please place your waste out for collection on **SATURDAY, NOVEMBER 9.**

PLEASE CHECK THE CALENDAR AND LOOK FOR THE ICONS TO SEE WHEN YOUR COLLECTION DAY WILL BE.





HOUSEHOLD HAZARDOUS WASTE (HHW)

The Household Hazardous Waste Depot is located at Kaizer Meadow Environmental Management Centre. It is open to all residents of the Municipality of Chester during regular landfill hours (see page 32).

Many products we use are hazardous and should not be thrown in the garbage. Here are a few things to keep in mind;

- Ensure that the materials being delivered to the HHW site are in their original container or a labeled container so that they can be easily identified. The containers should be in good condition and not leak.
- **If in doubt, find out!** Not sure if your material is hazardous? Call Kaizer Meadow to find out.

ACCEPTABLE ITEMS	UNACCEPTABLE ITEMS
<p>Paint Cleaners & Degreasers Fertilizers Bleaches Expandable foams (pressurized) Wood preservatives Fluorescent lights, including CFLs Solvents, varnishes, stains & thinners Used oils & transmission fluids Batteries Empty and full aerosol containers Fire extinguishers Herbicides & pesticides</p> 	<p>Business, industrial & institution waste Bio-medical waste Excessive amounts of material PCBs, radioactives & explosives Asbestos Unidentified material Compressed gas cylinders (oxygen, helium, acetylene, etc.) Flares (take directly to local RCMP office) Ammunition (take directly to local RCMP office)</p> 

- ⇒ When dropping off waste oil or gas, please make sure that these items are in a container that you do not wish to keep.
- ⇒ Please keep rechargeable batteries separate from alkaline batteries.
- ⇒ Empty aerosol cans can no longer be placed in the blue bag for recycling. Empty or full, they are hazardous. Please drop them off with other items at the HHW Depot.
- ⇒ Empty paint cans ARE NOT hazardous, however, under new program regulations, they need to be dropped off at the HHW Depot.



PROGRAM CHANGES FOR PAINT CANS

In early 2018, a new Paint Program Stewardship Plan was approved for the NS Paint Stewardship Program. Under the new plan, the program will now accept empty program paint cans, including aerosol paint cans. With that said, we are asking residents to no longer place empty cans in the garbage; empty cans should now be taken directly to Kaizer Meadow or dropped off at Adam's Bottle Exchange in Gold River.



INFORMATION ON HOUSEHOLD BATTERIES

Please note that there are battery collection tubes available at the Municipal Office (151 King Street) in Chester. These tubes are for **REGULAR HOUSEHOLD BATTERIES ONLY**. Any other batteries can be taken directly to Kaizer Meadow for disposal.

There is also a box to drop off old cell phones. Questions? Call 902-275-2330.



December 2024

Questions? Call 902-275-2330

IMPORTANT INFORMATION REGARDING CHRISTMAS DAY, BOXING DAY & NEW YEAR'S DAY 2025 WASTE COLLECTION

This year, if your collection day falls on **CHRISTMAS DAY** (Dec. 25), please place your waste out for collection on **SATURDAY, DECEMBER 21**.

If your collection day falls on **BOXING DAY** (Dec. 26), please place your waste out and it will be **COLLECTED AS USUAL**.

If your collection day falls on **NEW YEAR'S DAY 2025** (Jan. 1), please place your waste out on **SATURDAY, DECEMBER 28**.

PLEASE CHECK THE CALENDAR AND LOOK FOR THE ICONS TO SEE WHEN YOUR COLLECTION WILL BE.



Sun	Mon	Tue	Wed	Thu	Fri	Sat
1 WEEK B	2	3 HAVE WASTE CURBSIDE FOR 7 A.M.	4	5	6	7
8 WEEK A	9	10	11	12	13	14
15 WEEK B	16	17	18	19	20	21  ALTERNATE COLLECTION
22 WEEK A	23	24	25  CHRISTMAS DAY NO COLLECTION SITE CLOSED	26 BOXING DAY SITE CLOSED COLLECTION AS USUAL	27	28  ALTERNATE COLLECTION
29 WEEK B	30	31	JANUARY 1, 2025 NEW YEAR'S DAY NO COLLECTION SITE CLOSED	2	3	4



TAKING DOWN THE CHRISTMAS TREE?

No problem! Place it out on your next waste collection day and it will be collected as your bulky item!



DID YOU KNOW...

Most wrapping paper is recyclable and can go in your bag with other recyclable paper? Bows, ribbon and **FOIL** wrapping paper belong in the **GARBAGE**.

The Municipality of Chester would like to wish everyone a very happy holiday season!



ALTERNATIVE DROP-OFF SITES

Sometimes, residents will have an item that cannot be placed in the garbage or recyclables bag, such as a mini propane tank or an aerosol can. What can they do with that one item? Well, those items can always be dropped off at Kaizer Meadow, but sometimes that just isn't convenient. So, in an effort to make it a little more convenient, alternative drop-off sites are available to residents. Here are some items that cannot be collected curbside and their alternative drop off:

	Kaizer Meadow	Adam's Bottle Exchange	Hubbards Hardware	New Ross Home Hardware	Municipal Office
Aerosol cans (empty or full)	✓	✓			
Used oil & gasoline	✓				
Computer components & other Electronic waste	✓	✓			
Fluorescent lights & CFLs	✓	✓	✓	✓	
Herbicides & pesticides	✓				
Old cell phones	✓				✓
Household batteries	✓	✓	✓	✓	✓
Mini propane tanks	✓				
Half-full & empty paint cans	✓	✓			
Lead-acid batteries (automotive)	✓				

THERE'S AN APP FOR THAT!

R6RECYCLES

Questions about your waste collection schedule or what goes where? Download the **R6RECYCLES** app!

Or, go to www.chester.ca/r6recycles and get all the information the app offers.



GARBAGE? RECYCLABLE? COMPOSTABLE?

Confused about a few items that may (or may not be) in our sorting guide? Below are a few items that we get the most questions about.

ASHES

COOLED ashes can go into the green cart. It takes at least 3 weeks to completely cool them. Also be sure to douse the ashes with water once in your cart to avoid any dust getting into the collector's eyes when dumping the cart.



LED (LIGHT-EMITTING DIODE) LIGHTS & INCANDESCENT LIGHTS

LED lights, the kind that are more energy efficient than regular (incandescent) bulbs, and incandescent bulbs are garbage. To avoid breakage, you can place them into a cardboard box, label "**GLASS**" and put next to your other materials.



FROZEN JUICE CANS

Frozen juice cans—the kind made with tin lids and bottoms and cardboard in the middle - are **GARBAGE**. They are made of mixed materials and cannot be recycled.



HOT & COLD PAPER DRINK CUPS

Operational changes have made us change our messaging regarding the paper cup. Going forward, we ask that you place **ALL** paper drink cups into the garbage. This includes paper cups from Tim Hortons, McDonalds, Subway®, etc. For details on why our message has changed, see **PAGE 8**.



KEURIG® CUPS (K-CUPS)

These can be tricky. Unless you want to separate the components (remove lid and empty grinds), these cups are garbage because it is made of mixed materials. If you want to reduce waste, remove the lid and place it in the garbage; the grinds can be placed in to your green cart and the plastic cup can be rinsed and recycled!



STYROFOAM™

All Styrofoam™, regardless whether it has a recycling symbol on it or not, is **NOT** recyclable in our Municipality and should be placed in a clear bag with other garbage. This includes all Styrofoam™ cups, trays, packaging and containers.



FRYER GREASE / OIL

Cooled fryer grease/oil can go into your green cart. To avoid the oil leaking onto the ground, line your cart with leaves, paper towels or newspapers to absorb the liquid.



KITTY LITTER & DOG WASTE

ALL pet waste and litter is garbage. If you use a grocery bag for cleaning up after Fido, just toss the bag into a clear or black bag. The contents do not have to be emptied into the bag.



DOG FOOD & CAT FOOD BAGS

MOST of these items are made up of two or more materials (mixed) and cannot be recycled. Doing a simple tear test will tell you if the bag contains a plastic liner or not. Just rip the bag to see if there is a plastic film or liner where the tear ends. If there is, this means that the bag contains mixed materials and it belongs in the garbage.



ICE CREAM CONTAINERS

Ice cream containers - the kind that are made of a waxy cardboard material - are **GARBAGE**. Like the paper cup, we need to place these in the garbage due to operational changes at the composting facility (**SEE PAGE 8**).



KaizerMeadow

Environmental Management Centre

Municipality of the District of Chester

Solid Waste Services

450 Kaizer Meadow Road (Route 14, approx. 17 km north from Exit 8, Hwy. #103)

P O Box 369

Chester NS B0J 1J0

www.chester.ca

Phone 902-275-2330

Fax 902-275-1468

Email solidwaste@chester.ca

HOURS OF OPERATION:

Mon. to Sat. - 8:00 A.M. - 4:00 P.M.

Municipality of the District of Chester

Public Works Services

151 King Street

P O Box 369

Chester NS B0J 1J0

www.chester.ca

Phone 902-275-1312

Fax 902-275-3630

Email publicworks@chester.ca

HOURS OF OPERATION:

Mon. to Fri. - 8:30 A.M. - 4:30 P.M.

This calendar was sponsored by:

Municipality of the District of Chester



THE MUNICIPALITY OF
CHESTER